

**▶ Band Pass Filter for Frequency Shifted Repeater****1. Specification**

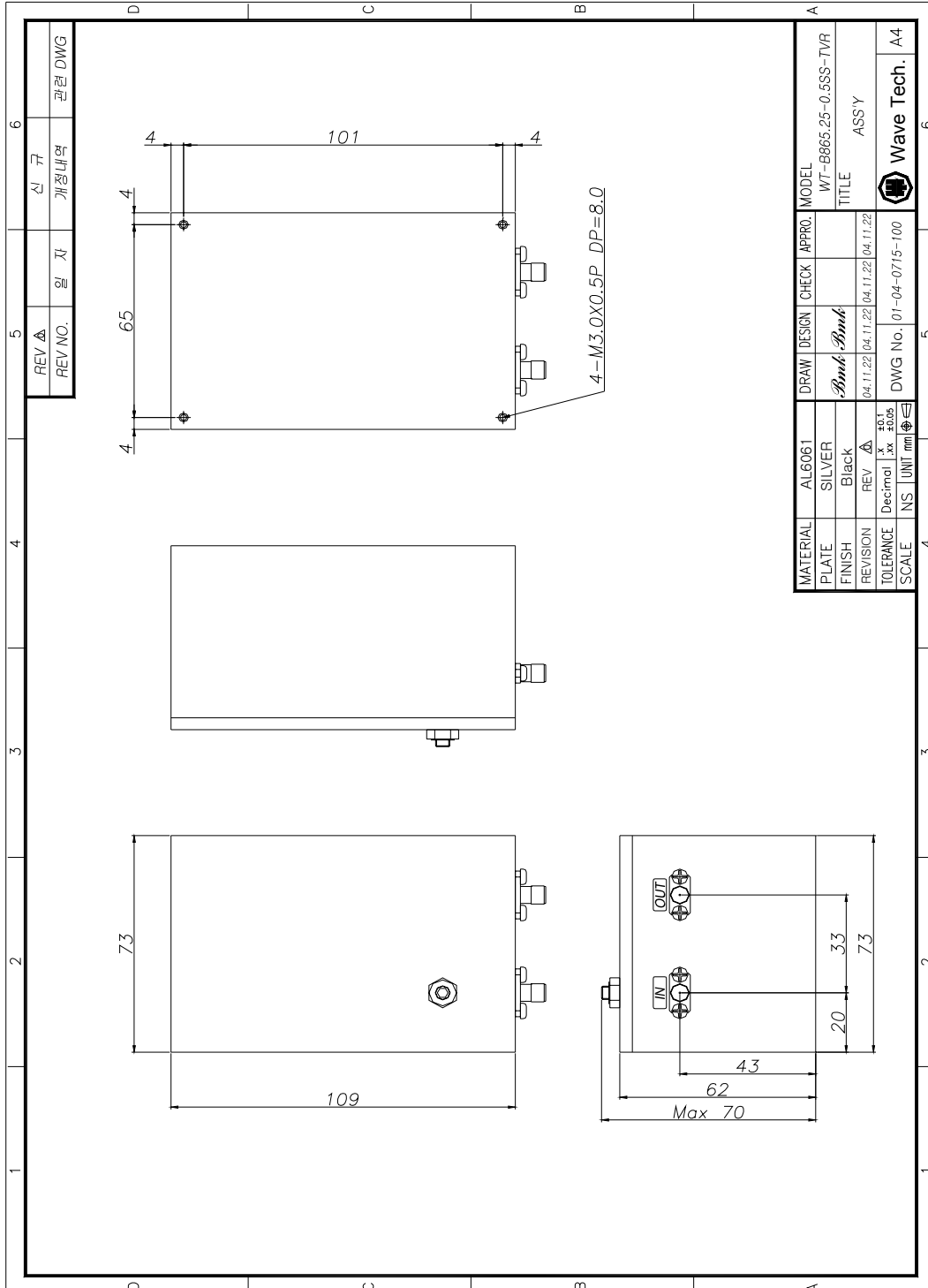
NO	Parameter	Specification	Remark
1	Frequency Range	865MHz ~ 865.5MHz	C Band (BW=0.5MHz)
2	Insertion Loss (Max)	5.0dB	
3	Return Loss (min)	20dB	
4	Ripple (Max)	0.5dB	
6	Attenuation (min)	856 ~ 861MHz → 70dBc	
8	Input Power Range	5W	
9	Impedance	50Ω	
10	Relative Humidity	0%~95%	
11	Operating Temp	-10℃ ~ +70℃	
12	Dimension	109mmX73mmX70mm (Max)	Tuning Screw included
13	Connector Type	IN , OUT → SMA-TYPE(F)	

- Parts List

NO.	Parts	Specification	Material	Remark
1	Housing	109mmX73mmX58mm	AL	Ag-plating
2	Cover	109mmX73mmX4mm(t)	AL	Ag-plating
3	Resonator	Ø13X51	SUS	Ag-plating
4	Connector	SMA-TYPE(F)	SUS	Ni-plating(PIN_Au-plating)
5	Notch	141 FL		
6	Tuning Screw	M5	SUS	Ag-plating
7	NUT	M5	SUS	
8	BOUT	M3X10 ²	SUS	
9	CAP BOLT	M7	Brass	
10	Painting	Black		



2. Drawing



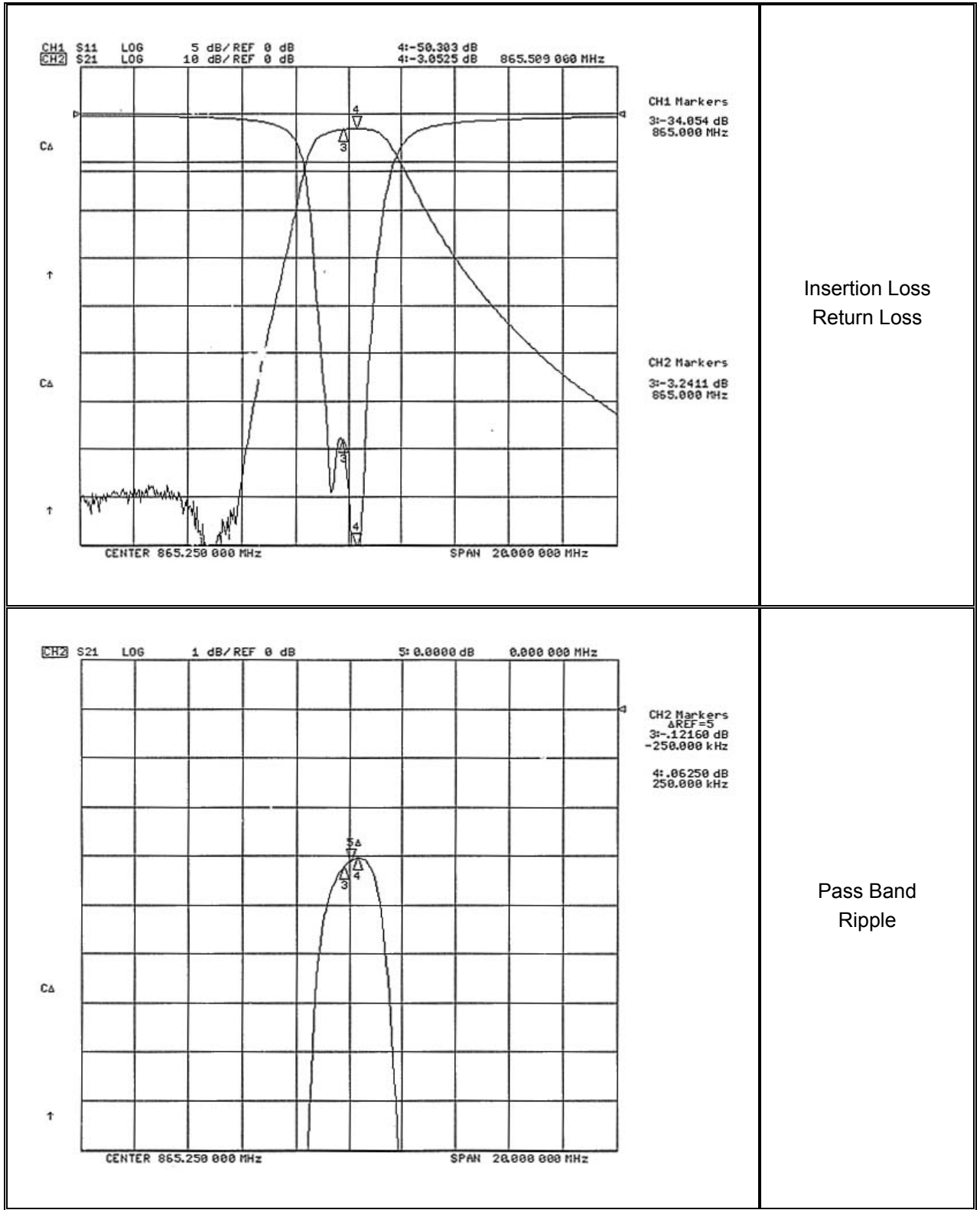


WAVE-TECH INC.

Bldg. Wave-Tech 4th floor, 14-4 Dangdong Gunpo Kyunggi Korea 435-010

Phone: +82-31-451-8774 / Fax: +82-31-451-8766

3. Test Data (Network Analyzer)





WAVE-TECH INC.

Bldg. Wave-Tech 4th floor, 14-4 Dangdong Gunpo Kyunggi Korea 435-010

Phone: +82-31-451-8774 / Fax: +82-31-451-8766

