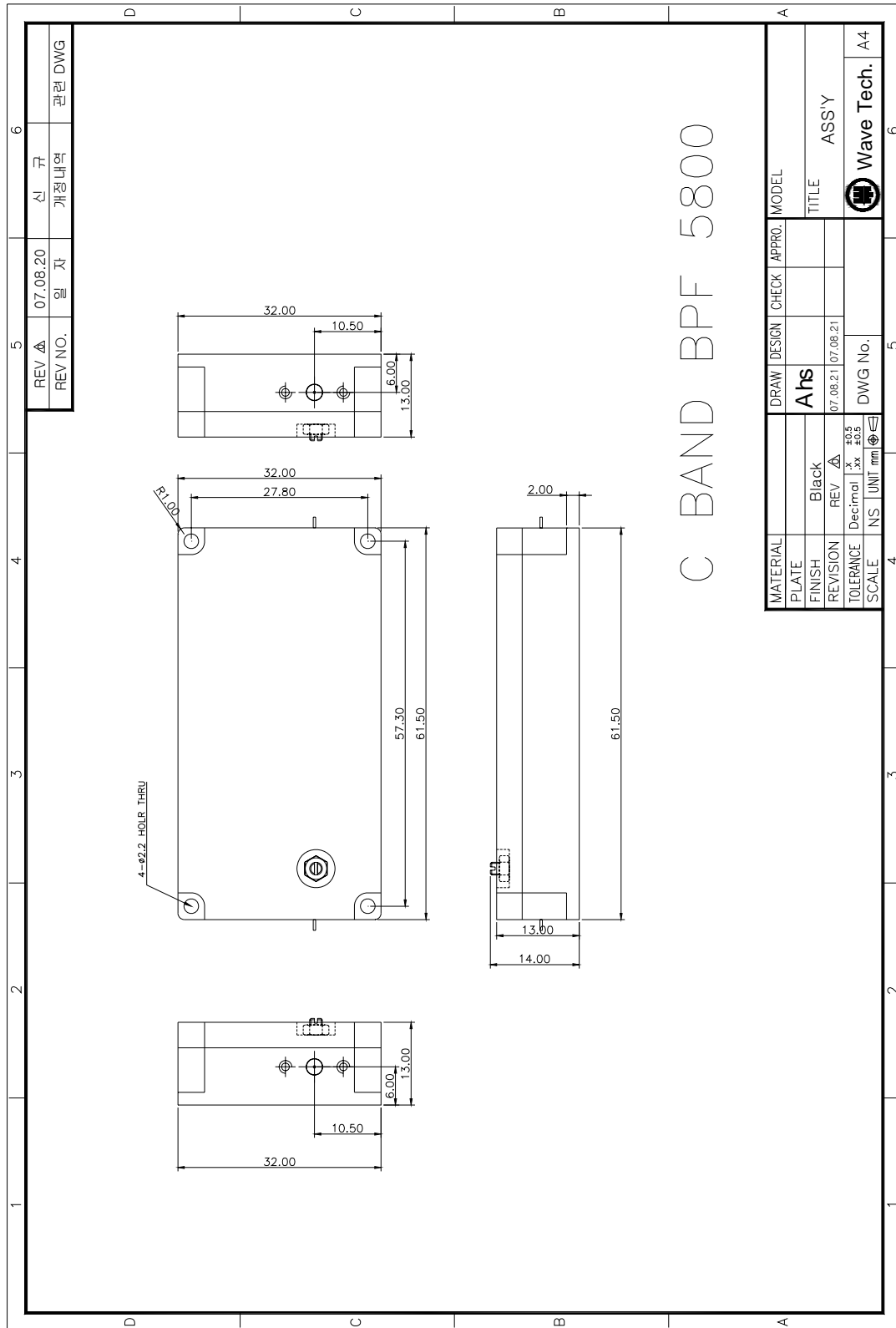


► **Microwave BPF \_ 5.5GHz~6.0GHz**

**1. Specification**

	Parameter	Specification	Remark
1	Passband Width	5560~6040 MHz	Fc=5800 MHz
2	Insertion Loss	2.0 dB Max	
3	Passband Ripple	0.7 dB Max	
4	In/Out Return Loss	15 dB Typ.	
5	Attenuation	60 dBc @ 3940~4300 MHz	
		35 dBc @ 6200 MHz	
6	Stopband Attenuation	70 dBc Min	
7	Input/Output Impedance	50 ohm	
8	Type	SMD or Drop-in, Removable SMA Connectorized	
9	Operating temperature	-40 ~ +63 Deg.	
10	Size	50.5 mm X 32 mm X 13 mm	Max.
11	ETC	Need Outline Drawing & Mount Hole Information	

## 2. Dimension



REV NO.	07.08.20	REV Δ	신 규
일 자	07.08.20	개정내역	관련 DWG

MATERIAL	DRAW	DESIGN	CHECK	APPRO.	MODEL
PLATE	Ahs				TITLE
FINISH	Black				ASSY
REVISION	REV Δ	07.08.21	07.08.21		DWG No.
TOLERANCE	Decimal	.x	.xx	.005	Wave Tech.
SCALE	NS	UNIT	mm		A4