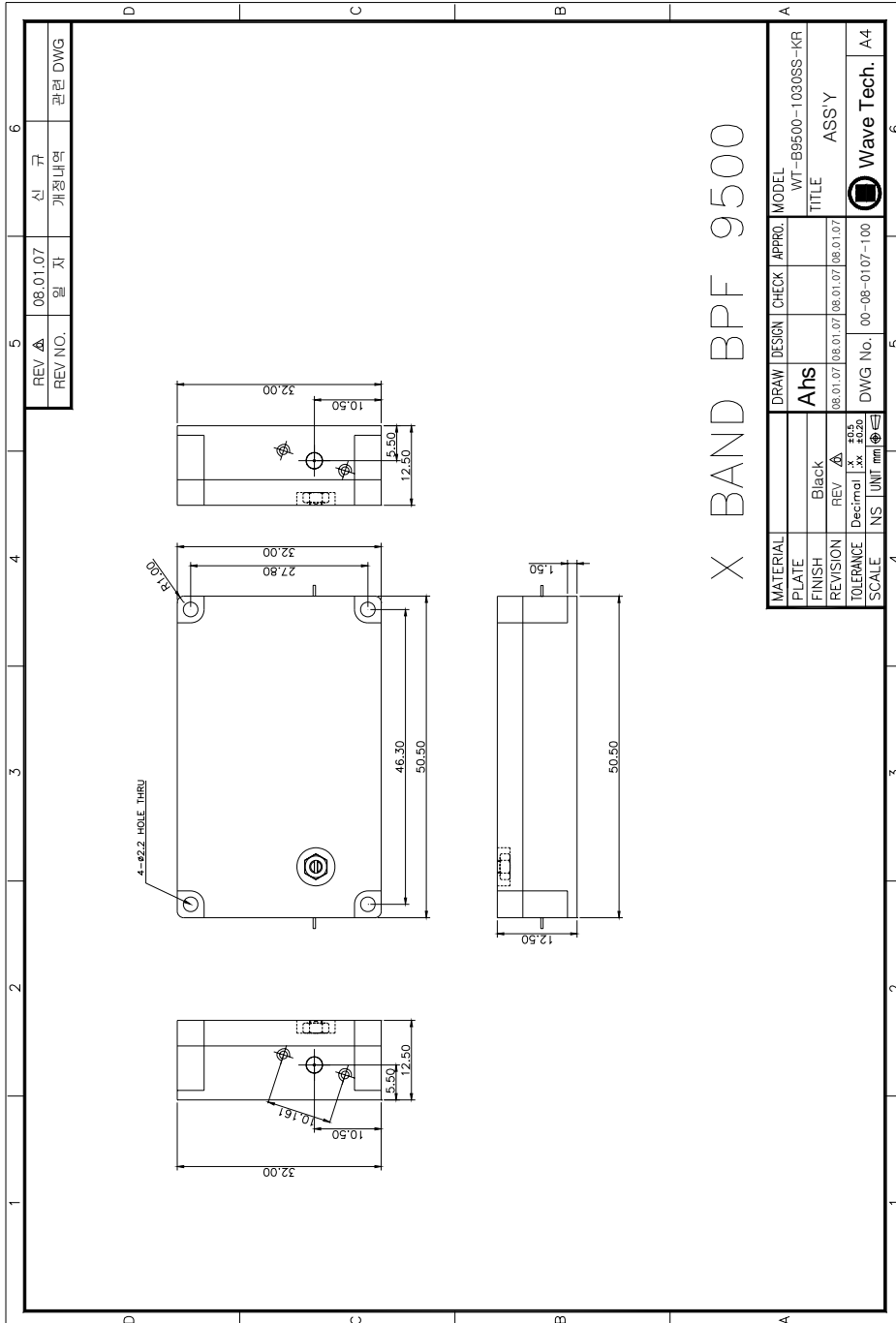


► **Microwave BPF for X Band \_ 8.9GHz~10.0GHz**

**1. Specification**

Parameter	Unit	Specification
Passband Width	MHz	8985~10015
Insertion Loss	dB	2.0 dB, Max
Passband Ripple	dB	1.1 dB, Max
In/Out Return Loss	dB	15, Typ.
Attenuation	dBc	35 dBc @ 8785 MHz
		50 dBc @ 7570 MHz
		15 dBc @ 10215 MHz
Stopband Attenuation	dBc	80, min.
Input/Output Impedance	ohm	50
Type	-	Drop-in, Removable SMA Connectorized
Operating temperature	Deg.	-40 ~ +85
Size	mm	50.5mm X 32mm X 12.5mm
ETC	-	Need Outline Drawing & Mount Hole Information

## 2. Dimension



X BAND BPF 9500

MATERIAL	DRAW	DESIGN	CHECK	APPRO.	MODEL
PLATE	Ahs				WT-B9500-10308S-KR
FINISH	Black				TITLE ASS'Y
REVISION	REV	08.01.07	08.01.07	08.01.07	
TOLERANCE	Decimal	xx	xx	xx	
SCALE	NS	UNIT	mm		

REV NO.	08.01.07	REV	08.01.07	08.01.07	08.01.07
REV	08.01.07	DESIGN	08.01.07	CHECK	08.01.07
APPRO.	08.01.07	APPRO.	08.01.07	APPRO.	08.01.07
DWG No.	00-08-0107-100				
					Wave Tech. A4